

## Software Installation

This Medline flash drive contains drivers and application software for the Si3000/5000 camera.

Double clicking your mouse on the file: "setup.bat" will start the installation process and offer to install:

1. ICube Windows drivers from NET GmbH, compatible with the Si3000/5000 camera.
2. The Si3000/5000 DirectShow camera driver, by EJC Associates. Used for making the camera compatible with DirectShow applications like DsCap, AmCap etc.
3. The DsCap DirectShow compatible camera viewer and capture application, by EJC Associates.

Please note, that each of the three installers will ask for your permission to install.

First give permission to install the ICube drivers. These drivers will be copied to your hard drive on your PC. Once the copy has completed, connect the camera USB cable to force Windows plug and play to detect the new hardware and automatically find and install these ICube drivers.

Once the drivers have successfully installed, you will see the camera listed under "Imaging Devices" in Windows Device Manager.

You should now continue with the installation. i.e allow the installation of DsCap and the Si3000/5000 DirectShow camera driver by EJC Associates.

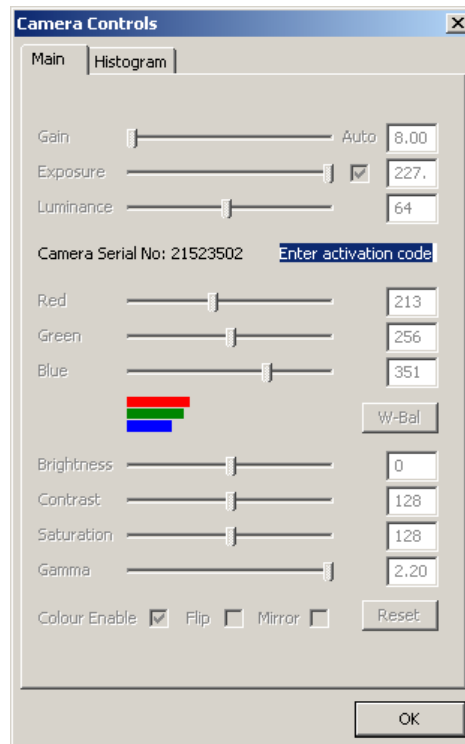
Please note that the installer for the Si3000/5000 driver makes changes to ICube driver settings and components. Hence the need to install the ICube drivers first.

DsCap may initially start in 'Demo Mode', with the video canvas displaying "Please register DsCap to remove this message". This won't appear if DsCap finds an activated Si3000/5000 Camera, which it treats as a dongle. Simply select 'Si3000/5000 Camera' from the DsCap device menu and If the camera is activated DsCap will disable 'Demo Mode' for the life of the current session. The session ends when you close DsCap.

During a session you may select other cameras without seeing the 'Demo Mode' message. A registered version of DsCap completely disables 'Demo Mode' and doesn't require the presence of a specific camera.

## Camera Activation

When the Si3000/5000 camera is selected from DsCap or any other DirectShow application, you may notice its camera controls page is disabled except for an edit box with the text "Enter activation code". See below.



You should enter the activation code supplied with your camera followed by the enter key.

A valid activation code will hide the edit box, activate the camera and allow the controls to be used. An activated camera also performs as a dongle for DsCap.

Please keep your activation code safe for future installations or technical support. The camera serial number is printed on the case and is always displayed on the Si3000/5000 camera controls page.

## Technical Support

Technical support is available from EJC Associates via the email address:

[support@ejc-associates.co.uk](mailto:support@ejc-associates.co.uk)

Please provide the following information when applying.

1. Your name and address.
2. Your camera serial number. This may be found with your camera and is always displayed on the DsCap camera controls page when the Si3000/5000 camera is selected and available.
3. The activation code bundled with your camera for unlocking the Si3000/5000 camera controls and full functionality of DsCap.
4. The version of DsCap installed.